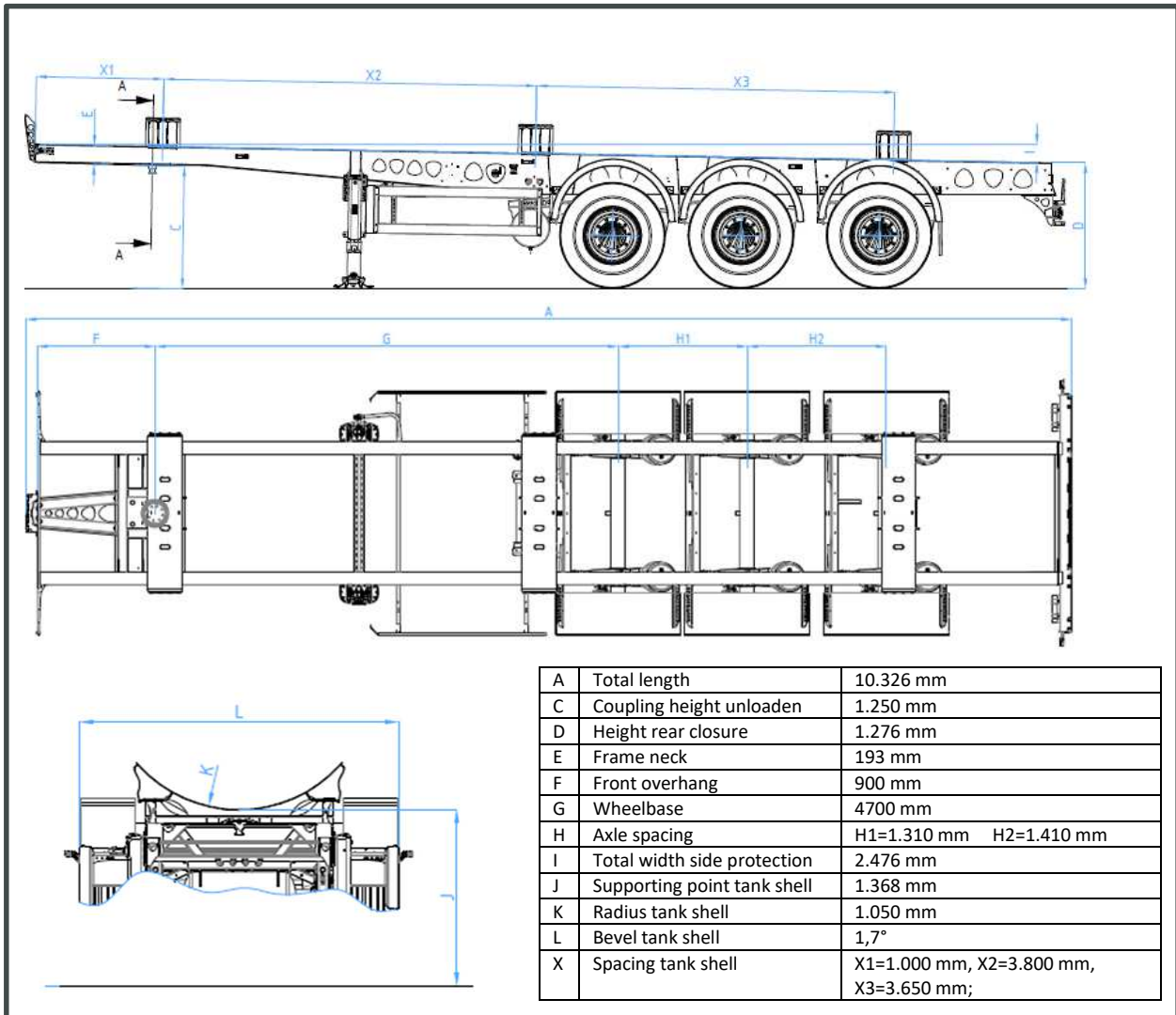


SAPL 24 SAAG

Semi-trailer in lightweight steel construction
with welded supporting tray for tank roof installation



Technical Data (Basic model)

Net weight	3.120	kgs
Vertical load / technically possible	11.000 / 12.000	kgs
Axle load / technically possible	24.000 / 27.000	kgs
Total weight / technically possible	35.000 / 39.000	kgs
Vehicle width, depending on body, max.	2.550	mm
Front overhang radius	1.600	mm
Tire equipment	385 / 65 R 22,5"	6x
Spring track / wheel track	1.300 / 2.040	mm
Payload incl. technically possible body	32.500	kgs

SAPL 24 SAAG

Semi-trailer in lightweight steel construction
with welded supporting tray for tank roof installation



Basic Equipment:

- Frame weldment out of fine-grained steel S700 incl. 3 different welded tank shells (r=1.050)
- Mechanical landing gears 2 x 12 t o with thrust compensation
- SAF axle assemblies with disc brakes 370 mm; air suspension with lifting/ lowering device, actuation valve on the right front next to the landing gear
- 6 fold set of tires, Goodyear, dimension 385/65 R22.5, auf steel rims
- EG braking system type Knorr, with Roll Stability Programm (RSP), EBS system 2S/2M, spring loaded parking brake with double release valve, aluminium compressed air reservoir, diagnostic options via EBS socket ISO 7638, actuation of the parking brake on the right front side next to the landing gear
- 24 volt lighting system type Hella, 2 x 7-pole and 1 x 15 pole socket conforming to DIN ISO 3731/12098, 2 multifunctional rear lights (incl. rear fog lamp and reversing light), 2 outline marker light with rubber arms (LED), 2 side lights (LED) in the front with foldable holders (with gas pressure springs), 3 pairs of side marker lamps (LED) mounted on the main frame
- Practice – oriented equipment with semicircular mudguards with integrated splash guard according 91/226/EWG
- Screwed mudguard holders (stainless steel)
- 2 wheel chock with holder
- ECE 70 reflection board
- Underride guard according to 70/221/EWG and open side guard, according to 89/297/EWG, made from Aluminium profile
- Consoles with fitting of the underride guard, screwed on the long beams
- Painting: Chassis, landing gears and holder of the underride guard in colour MB7350 (Mercedes Benz, nova grey), lateral protective device in aluminium anodized, cross brace of landing gear in RAL 9005 black; Profiles and inaccessible areas additionally protected with cavity. Holder of the mudguard, socket holder and light carriers in stainless steel.

